



SATURN A LED E



SATURN A LED HPE



IP65

# SATURN A LED

RG0



m<sup>2</sup>  
0,19

220-240V  
50-60Hz



**CORPO:** Corpo in lega d'alluminio pressofuso con interni in ferro zincato a caldo bianco verniciato con polveri poliesteri, colore standard nero grafite. Trattamento chimico di sgrassaggio e fosfatazione del grezzo, resistente a raggi UV e nebbie saline.

**GUARNIZIONI:** in silicone

**UNITÀ DI ALIMENTAZIONE:** Apertura del vano elettrico dall'alto con viti inox AISI 304. Sezionatore automatico di linea. Componenti elettrici montati su piastra di fissaggio facilmente rimuovibile. Alimentatore elettronico full dim per applicazioni outdoor. Efficienza a pieno carico > 90%, durata di vita 100000h a Tc life. 220÷240V / 50-60Hz. Classe di isolamento II. Fattore di potenza >0,98.

**CONNESSIONE:** pressacavo M20 (cavo 9÷11mm).

**MODULI LED:** moduli LED costituiti da 12/24 chip multi/die ad alta potenza di ultima generazione. Elevata precisione delle caratteristiche cromatiche conformi ai bin ANSI a 85°C. Efficienza 170lm/W @ 640mA 25°C. Vita utile del led 80.000h L80B20. Concetto di illuminazione Multi-layer in cui ogni ottica illumina tutta l'area in modo da garantire i parametri di uniformità anche in caso di spegnimento di qualche LED.

**ATTACCO PALO:** Montaggio testapalo diametro 60mm, blocco con grani inox.

**BODY:** Body made of die-cast aluminium with inside part of white galvanized iron, polyester powder coated in standard graphite black colour. Degreasing chemical treatment and phosphatizing of the raw, UV and saline fog resistant.

**GASKET:** made in silicone

**POWER UNITS:** Top opening with stainless steel screws INOX AISI 304. Automatic power cut - off device.

Electrical components mounted on easily removable fixing plate. Full load efficiency >90%. Power supply expected life at Tc life 100.000h. 220÷240V / 50-60Hz. Insulation Class II. Power factor >0,98.

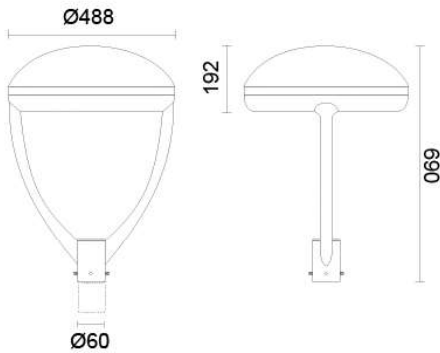
**CONNECTION:** M20 cable gland (9÷11mm cable)

**LED MODULES:** LED modules consisting of 12/24 new generation multi/die, high power package chips.

Hot/color targeting ensures color is with ANSI bin at 85°C. Efficiency 170lm/W @ 640mA 25°C). Useful life of the led 80.000h L80B20. Secondary optic made of stabilized PMMA. Multi-layer lighting concept in which each optic illuminates the entire surface to ensure uniformity even when some LEDs are failed.

**POLE CONNECTION:** Post top mounting diameter 60mm, fixing by means of stainless steel grains.

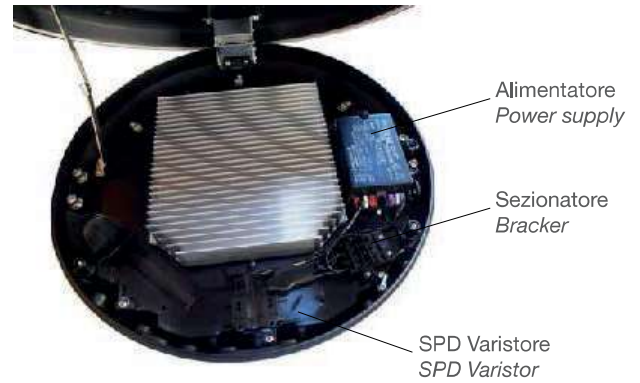
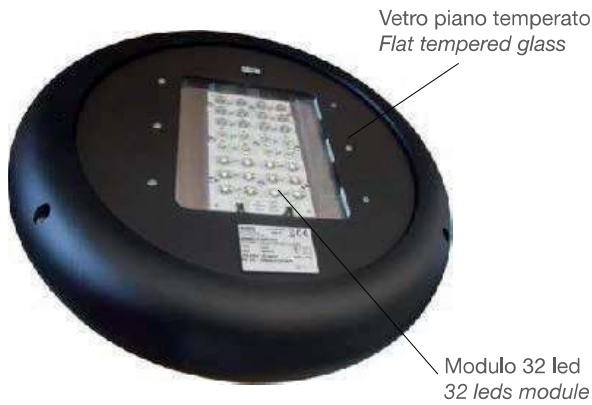
**DIMENSIONI - DIMENSIONS**



**SATURN A LED E**

**SCHERMO:** Vetro di chiusura piano temperato spessore 4 mm.

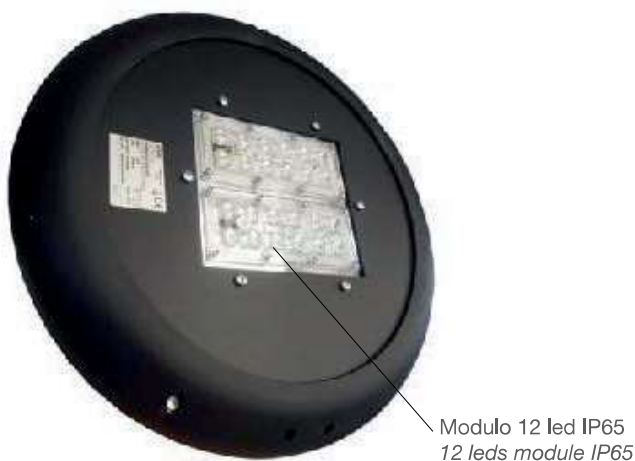
**SCREEN:** Closing flat tempered glass, thickness 4mm.



**SATURN A LED HPE**

**SCHERMO:** Modulo lenti in PMMA stabilizzato con guarnizione al silicone che garantiscono il grado di protezione IP65 e la massima efficienza lm/W.

**SCREEN:** Optical group consisting of a lens module in stabilized PMMA that also guarantees sealing and maximum efficiency lm/W.



## SATURN A LED E

### ▲ DATI IDENTIFICATIVI E PRESTAZIONI - IDENTIFICATION DATA AND PERFORMANCES

Codice iniziale Initial code	Nome Name	Watt	mA max	N. Led	Lm out	Kelvin	CRI	IP	CL	Col	Weight
000681233_A	SATURN A E 12LED 39W 3K	39	500	12	4700	3000	70	65	II	RAL 9011 ■	10.5
000681234_A	SATURN A E 12LED 39W 4K	39	500	12	5050	4000	70	65	II	RAL 9011 ■	10.5
000682433_A	SATURN A E 24LED 70W 3K	70	450	24	8850	3000	70	65	II	RAL 9011 ■	11.5
000682434_A	SATURN A E 24LED 70W 4K	70	450	24	9550	4000	70	65	II	RAL 9011 ■	11.5

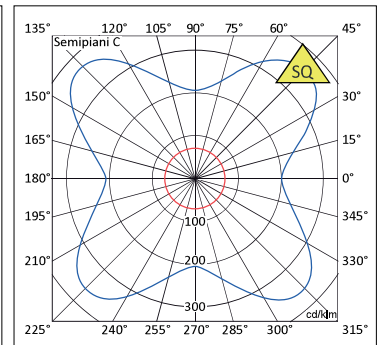
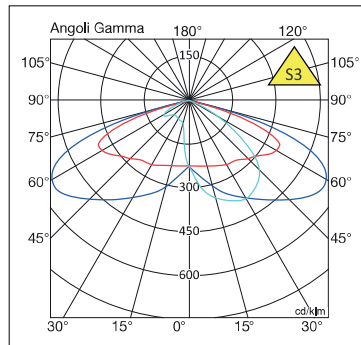
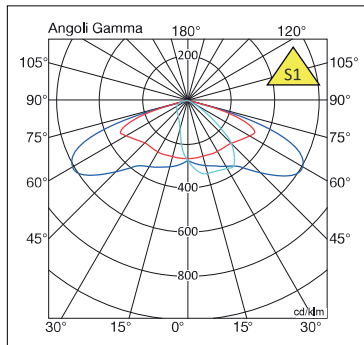
Come comporre il codice prodotto (rispettare la sequenza): **Codice iniziale (▲) Codice finale (●) Dimmerazione (■)**  
 How to compose the product code (respect the sequence): **Initial code (▲) Last number (●) Dimming profile (■)**

### PERFORMANCE - PERFORMANCES

N. LED	mA	Watt	3000K LED Lumen	3000K Lm output	4000K LED Lumen	4000K Lm output
12	200	16	2650	2250	2850	2400
	350	27	4200	3350	4550	3850
	500	39	5550	4700	6000	5050
24	200	32	5300	4450	5750	4850
	350	53	8450	7100	9100	7650
	450	70	10550	8850	11350	9550

### ● FOTOMETRIE - PHOTOMETRY

Codice finale Last number	Ottica Optics
2	S1
3	S3
9	SQ



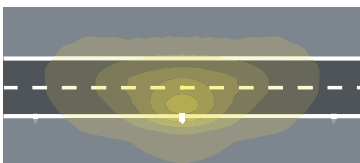
### ■ DIMMERAZIONE - DIMMING

Code	Rset	Switch	1-10V	Dali	CLO	Crono timer	Mains dim	Conveyed waves
-	S*	/	/	S*	/	S*	S*	/

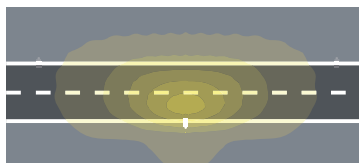
- S Standard con possibilità di programmazione dopo l'acquisto.  
 - S\* Standard con programmazione da eseguire in azienda.  
 (vedi modulo dimmer disponibile sul sito Web [www.faeber.com](http://www.faeber.com))

- S Standard with possibility of setting after purchase  
 - S\* Standard with setting to be done at the factory  
 (see dimming form available on website [www.faeber.com](http://www.faeber.com))

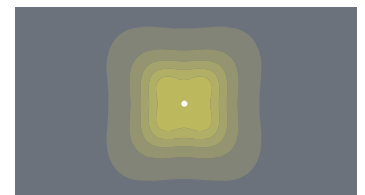
### OTTICA - OPTICS



S1 - Per strade standard  
 S1 - For standard streets



S3 - Per strade larghe  
 S3 - For wide streets



SQ - Per piazze e parchi  
 SQ - For squares and parks

### ACCESSORI - ACCESSORIES: rif pagg. 84-85

## SATURN A LED HPE

### ▲ DATI IDENTIFICATIVI E PRESTAZIONI - IDENTIFICATION DATA AND PERFORMANCES

Codice iniziale Initial code	Nome Name	Watt	mA max	N. Led	Lm out	Kelvin	CRI	IP	CL	Col	Weight
000571233_A	SATURN A HPE 12LED 39W 3K	39	500	12	5250	3000	70	65	II	RAL 9011 ■	10,5
000571234_A	SATURN A HPE 12LED 39W 4K	39	500	12	5650	4000	70	65	II	RAL 9011 ■	10,5
000572433_A	SATURN A HPE 24LED 78W 3K	78	500	24	10450	3000	70	65	II	RAL 9011 ■	11,5
000572434_A	SATURN A HPE 24LED 78W 4K	78	500	24	11300	4000	70	65	II	RAL 9011 ■	11,5

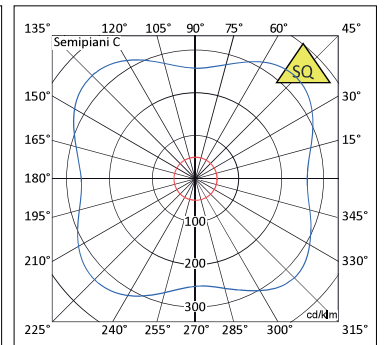
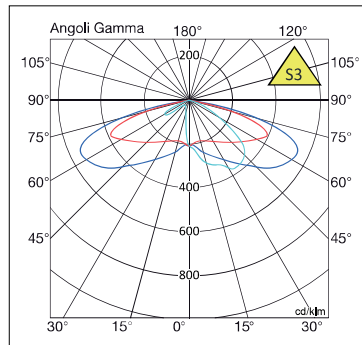
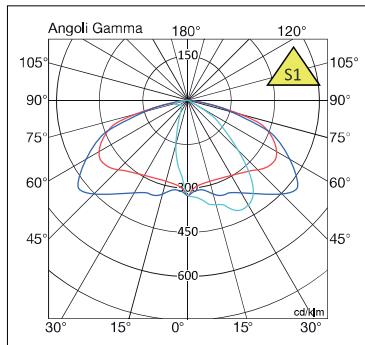
Come comporre il codice prodotto (rispettare la sequenza): **Codice iniziale (▲) Codice finale (●) Dimmerazione (■)**  
 How to compose the product code (respect the sequence): **Initial code (▲) Last number (●) Dimming profile (■)**

### PERFORMANCE - PERFORMANCES

N. LED	mA	Watt	3000K LED Lumen	3000K Lm output	4000K LED Lumen	4000K Lm output
12	200	16	2650	2500	2850	2700
	350	27	4200	3950	4550	4300
	500	39	5550	5250	6000	5650
24	200	32	5300	5000	5750	5400
	350	53	8450	7950	9100	8550
	500	78	11150	10450	12050	11300

### ● FOTOMETRIE - PHOTOMETRY

Codice finale Last number	Optica Optics
2	S1
3	S3
9	SQ



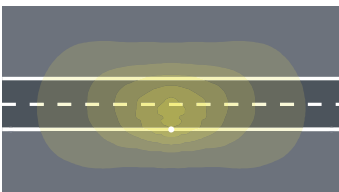
### ■ DIMMERAZIONE - DIMMING

Code	Rset	Switch	1-10V	Dali	CLO	Crono timer	Mains dim	Conveyed waves
-	S*	/	/	S*	/	S*	S*	/

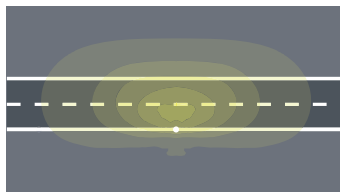
- S Standard con possibilità di programmazione dopo l'acquisto.  
 - S\* Standard con programmazione da eseguire in azienda.  
 (vedi modulo dimmer disponibile sul sito Web [www.faeber.com](http://www.faeber.com))

- S Standard with possibility of setting after purchase  
 - S\* Standard with setting to be done at the factory  
 (see dimming form available on website [www.faeber.com](http://www.faeber.com))

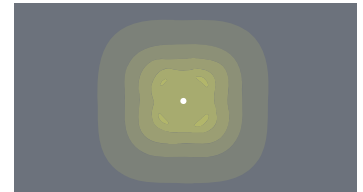
### OTTICA - OPTICS



S1 - Per strade standard  
 S1 - For standard streets



S3 - Per strade larghe  
 S3 - For wide streets



SQ - Per piazze e parchi  
 SQ - For squares and parks

### ACCESSORI - ACCESSORIES: rif pagg. 84-85